

# Metrix Double Door Cupboards

## Product Specification



### Key Features

#### 10 year guarantee

Designed and manufactured to meet the highest British and international standards  
 Full range of Triumph colours available  
 Removable barrel lock with 2 split bow keys, which suite with all other products in the range  
 Accepts A4/ foolscap suspension filing  
 Lateral filing pockets available to order  
 Accepts box files  
 Levelling feet included  
 Fully welded carcass and uniform base for maximum strength and stability  
 Swan neck handle detail

#### Optional Extras

Full range of Triumph accessories  
 Interlock anti-tilt optional

### Specification

800 and 1000mm widths available

#### 800w double door

1980, 1880, 1680, 1380, 1280, 1180, 1080, 980 heights available  
 690-720 desk high,  
 low profile shelf included

#### 1000w double door

2080, 1980, 1880, 1680, 1480, 1380, 1280, 1180, 1080 and 980 heights available  
 690-720mm desk high,  
 low profile shelf included

Texture paint finish, scratch resistant and environmentally friendl

### Finishes

#### Full range steel storage colours

			
BL5	GP1	CR1	GY5
			
RD1	OR3	YW1	GN4
			
FT1	OT3	OX1	PT2
			
SG1	SG2	SG8	CW1
			
CO1	BU3	AQ2	PI1
			
FU1	WM1	MT1	

**triumph**

corporate furniture and storage

## Metrix Double Door Cupboards



**M221D**  
h2220 x w1000 x d475



**M201D**  
h2080 x w1000 x d475



**M191D**  
h1980 x w1000 x d475



**M181D**  
h1880 x w1000 x d475



**M161D**  
h1680 x w1000 x d475



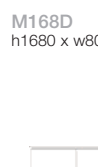
**M141D**  
h1480 x w1000 x d475



**M198D**  
h1980 x w800 x d475



**M188D**  
h1880 x w800 x d475



**M168D**  
h1680 x w800 x d475



**M131D**  
h1380 x w1000 x d475



**M121D**  
h1280 x w1000 x d475



**M101D**  
h1080 x w1000 x d475



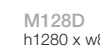
**M981D**  
h980 x w1000 x d475



**M691D**  
h690-720 x w1000 x d475  
Low profile shelf included



**M138D**  
h1380 x w800 x d475



**M128D**  
h1280 x w800 x d475



**M108D**  
h1080 x w800 x d475

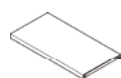


**M988D**  
h980 x w800 x d475

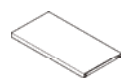


**M698D**  
h690-720 x w800 x d475  
Low profile shelf included

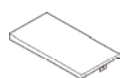
## Metrix Double Door Cupboard Accessories



**MS8**  
Standard Shelf  
20h x 713w x 404d



**MS10/3**  
Standard Shelf  
Pack 3



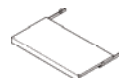
**MWB8**  
Wardrobe shelf  
80h x 713w x 404d



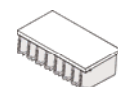
**MSALFS8**  
Duo slotted adjustable  
lateral filing shelf  
170h x 713w x 404d



**MSFS8**  
Slotted filing shelf  
145h x 713w x 404d



**MRS8**  
Pull out reference shelf  
40h x 713w x 404d



**MLFS8**  
Lateral filing shelf fixed at  
330mm centres  
31h x 713w x 404d



**MALCR8**  
Adjustable lateral  
filing cradle  
27h x 713 x 404d

**MS10**  
20h x 885w x 404d

**MWB10**  
80h x 885w x 404d

**MSALFS10**  
170h x 885w x 404d

**MSFS10**  
145h x 885w x 404d

**MRS10**  
40h x 885w x 404d

**MLFS10**  
31h x 885w x 404d

**MALCR10**  
27h x 885w x 404d

**MS12**  
20h x 1085w x 404d

**MSDIV**  
Dividers for slotted  
filing shelf pack 5

**MSFS12**  
145h x 1085w x 404d

**MRS12**  
40h x 1085w x 404d

**MLFS12**  
31h x 1085w x 404d

**MALCR12**  
27h x 1085w x 404d



**MLC8**  
Lockable  
compartment  
400h x 713w x 404d



**MFD8**  
**MFD10**  
**MFD12**  
Pull out filing drawer  
shown with cd rack  
100h x 660w x 370d  
(internal drawer dims)



**MLS10**  
Letter Sorter  
330h x 885w x 404d



**MPCR8**  
**MPCR10**  
**MPCR12**  
Pull out vertical  
cradle with cross bar



**MCR8**  
**MCR10**  
**MCR12**  
Cross rail  
converts foolscap  
to A4



**MDPC**  
Channels for  
MALCR



**MFDCP**  
Compressor plate  
for pull out filing  
drawer pack 6



**SCLIPS**  
Shelf Clips  
pack 12

**MLC10**  
400h x 885w x 404d



**MLSS**  
Additional shelves  
for Letter Sorter  
(5 pack)



**AIH80**  
Index Card  
Holders  
pack 10



**MDPB**  
T Bars for  
MALCR



**MDDIV**  
Dividers for pull  
out filing drawer  
pack 5

**MFDCDR8**  
**MFDCDR10**  
**MFDCDR12**  
CD storage rack for  
pull out filing drawer

## Key Information

Fast Key hold stock of key blanks and will cut and supply replacement and master keys for most of our keys within 24 hours. Master keys will only be supplied on an official order or letterhead which must show the end user and contact name.

### Simple steps to Order:

1. Make a note of the product
2. Make a note of the serial number on the lock
3. Directly contact Fast key
4. Follow the instructions Fast Key provide

**Contact** : Marc Narbeth    **T** : 01268 562562    **F** : 01268 570121  
Fast Key Services Ltd : 3 Pilot Close, Fulmar Way, Wickford, Essex SS11 8YW



## Filing Drawer MFD (CD Rack) allowing 25mm above drawer height Fixed distance 150mm between drawers

- INT15D6 Allows maximum of 6 Drawers
- INT15D5 Allows maximum of 5 Drawers
- INT15D4 Allows maximum of 4 Drawers
- INT15D3 Allows maximum of 3 Drawers
- INT15D2 Allows maximum of 2 Drawers

## Filing Drawer MFD (Lloyd George medical wallet) allowing 100mm above drawer height. Fixed distance 225mm between drawers

- INT22D5 Allows maximum of 5 Drawers
- INT22D4 Allows maximum of 4 Drawers
- INT22D3 Allows maximum of 3 Drawers
- INT22D2 Allows maximum of 2 Drawers

## Vertical Cradle MPCR and pockets

### Fixed distance 275mm between cradles

- INT30D4 Allows maximum of 4 Cradles
- INT30D3 Allows maximum of 3 Cradles
- INT30D2 Allows maximum of 2 Cradles

	Maximum Number of Pull outs used with Anti-tilt	Fixed Distance
Filing Drawer (MFD)	6	150mm
Filing Drawer (MFD)	5	225mm
Vertical Cradle (MPCR)	4	275mm

	No. of Slots From Base	No. of Slots After
Filing Drawer (MFD)	8	6
Filing Drawer (MFD) (with Lloyd George wallets)	8	9
Vertical Cradle (MPCR)	10	11



# Filing Capacity

A4 lever arch and lateral file capacity. Units showing maximum capacity of A4 Lever Arch files on shelves and Magnifile Lateral Files on adjustable lateral filing cradles.

Space Left  
52mm 25mm

2220 High

Space Left

1980 High

Space Left

1880 High

Space Left  
12mm 185mm

1680 High

Space Left  
12mm 185mm

1480 High

1380 High

1280 High

Space Left  
313mm 85mm

1080 High

Space Left  
313mm

980 High

695 High

**A4 lever arch Shelves**  
shelf to shelf 350mm  
between shelves 330mm

**Lateral File Shelves**  
shelf to shelf 300mm  
between shelves 270mm

# Metrix Double Door Cupboards are Certified to the following British Standards

- BS 1449 Part 1 : 1983** Steel. A certificate of conformity is provided by the supplier for each delivery of Steel received.
- BS 4875-8 : 1998** For furniture strength and stability of furniture, methods for determination of stability of non-domestic storage.
- BS EN 14073-2 : 2004** For office furniture - storage furniture : safety requirements.
- BS EN 14073-3 : 2004** For office furniture - storage furniture : test methods for the determination of stability and strength of structure.
- BS EN 14074 : 2004** For office furniture, tables, desks and storage furniture : test methods for the determination of strength and durability of moving parts.
- BS 4438 : 1969** For filing cabinets and suspended filing pockets.
- BS 4875-7 Level 4 : 2006** For strength and stability of furniture, domestic and contract storage furniture - performance requirements.

