

L^m Dual Access Units Product Specification



Key Features

15 year guarantee

Designed and manufactured to meet the highest British and international standards
 Full range of Triumph colours available
 Fully welded carcass with a seamless frame, drawers, flippers, and doors
 Removable barrel lock with 2 split bow keys, which suite with all other products in the range
 400 flipper modules accommodate lateral filing
 Letterbox drawer handles
 Many other sizes and configurations available on request
 Fully welded carcass and cruciform base for maximum strength and stability

Optional Extras

Counterweights optional
 Drawer divider (2 pack)
 Cross bar (2 pack)
 CD storage rack
 Cross rail to convert foolscap to A4 Side on (800 unit)
 Cross rail to convert foolscap to A4 Side on (1000 unit)

Specification

800 and 1000 widths available
 1980, 1880, 1780, 1680, 1580, 1480, 1380, 1280, 1180, 1080, 980, 690 heights available
 Soft close flippers and drawers
 Texture paint finish, scratch resistant and environmentally friendly
 Keys : 2000 differs

Finishes

Full range steel storage colours

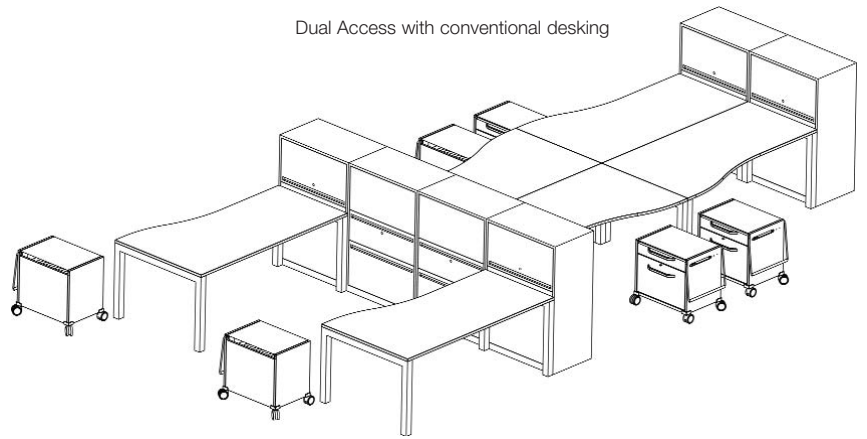
			
BL5	GP1	CR1	GY5
			
RD1	OR3	YW1	GN4
			
FT1	OT3	OX1	PT2
			
SG1	SG2	SG8	CW1
			
CO1	BU3	AQ2	PI1
			
FU1	WM1	MT1	

triumph

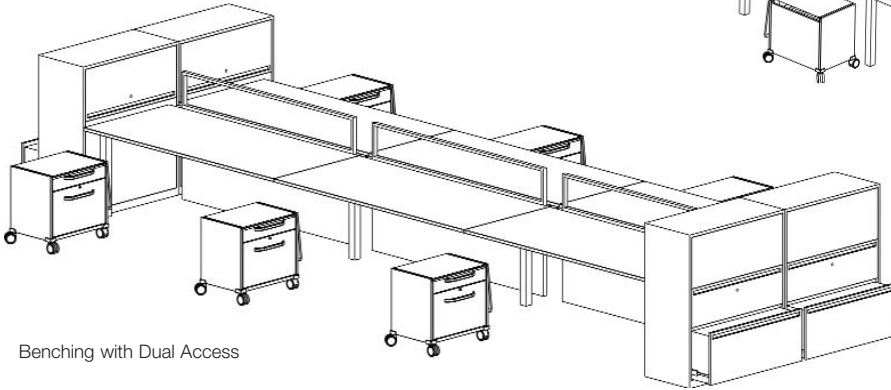
corporate furniture and storage

L^m Dual Access with benching and conventional desking

Dual Access with conventional desking

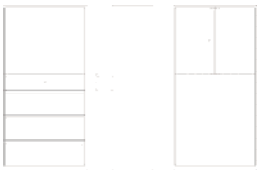


Benching with Dual Access



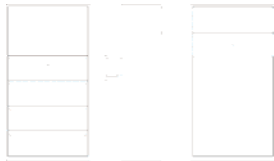
L^m Dual Access Units

Direction A Direction B



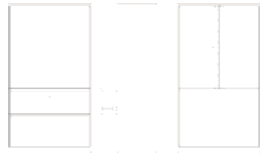
TDA1913D3D2/DD8
1980h x 1000w x 473d
TDA1983D3D2/DD8
1980h x 800w x 473d

Direction A Direction B



TDA1814D3/2F3
1880h x 1000w x 473d
TDA1884D3/2F3
1880h x 800w x 473d

Direction A Direction B



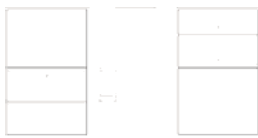
TDA171D4D3/DD10
1780h x 1000w x 473d
TDA178D4D3/DD10
1780h x 800w x 473d

Direction A Direction B



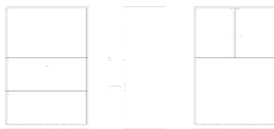
TDA161D4D3/DD9
1680h x 1000w x 473d
TDA168D4D3/DD9
1680h x 800w x 473d

Direction A Direction B



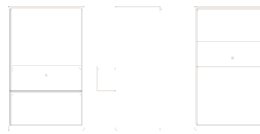
TDA1512D4/F3F4
1580h x 1000w x 473d
TDA1582D4/F3F4
1580h x 800w x 473d

Direction A Direction B



TDA1412D4/DD6
1480h x 1000w x 473d
TDA1482D4/DD6
1480h x 800w x 473d

Direction A Direction B



TDA141D4D3WB7/F3F4
1480h x 1000w x 473d
TDA148D4D3WB7/F3F4
1480h x 800w x 473d

Direction A Direction B



TDA1313D3/F4
1380h x 1000w x 473d
TDA1383D3/F4
1380h x 800w x 473d

Direction A Direction B



TDA1214D2/F4
1280h x 1000w x 473d
TDA1284D2/F4
1280h x 800w x 473d

Direction A Direction B



TDA121D4D2/DD6
1280h x 1000w x 473d
TDA128D4D2/DD6
1280h x 800w x 473d

Direction A Direction B



TDA111D4D3/F4
1180h x 1000w x 473d
TDA118D4D3/F4
1180h x 800w x 473d

Direction A Direction B



TDA101D4D3/F3
1080h x 1000w x 473d
TDA108D4D3/F3
1080h x 800w x 473d

Direction A Direction B



TDA9812D3/F3
980h x 1000w x 473d
TDA9882D3/F3
980h x 800w x 473d

Direction A Direction B



TDA691D3/D3
690h x 1000w x 473d
TDA698D3/D3
690h x 800w x 473d

Product Cleaning

To care for your Triumph unit we recommend it is wiped over with a damp cloth or duster.
Do not use any abrasive or solvent based cleaner that may permanently damage the paint finish.

Key Information

Fast Key hold stock of key blanks and will cut and supply replacement and master keys for most of our keys within 24 hours.
Master keys will only be supplied on an official order or letterhead which must show the end user and contact name.



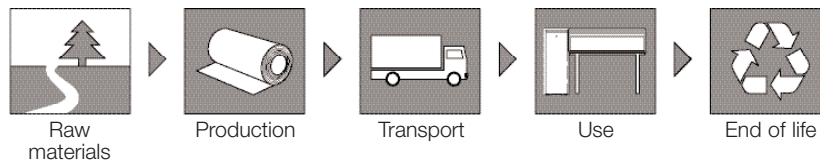
Simple steps to Order:

1. Make a note of the product
2. Make a note of the serial number on the lock
3. Directly contact Fast key
4. Follow the instructions Fast Key provide

Contact : Marc Narbeth **T** : 01268 562562 **F** : 01268 570121
Fast Key Services LTD : 3 Pilot Close, Fulmar Way, Wickford, Essex SS11 8YW

www.fastkeys.co.uk

Environment : Product Lifecycle



L^m Dual Access Units are Certified to the following British Standards

BS 1449 Part 1 : 1983	Steel. A certificate of conformity is provided by the supplier for each delivery of Steel received.
BS 4875-8 : 1998	For furniture strength and stability of furniture, methods for determination of stability of non-domestic storage.
BS EN 14073-2 : 2004	For office furniture - storage furniture : safety requirements.
BS EN 14073-3 : 2004	For office furniture - storage furniture : test methods for the determination of stability and strength of structure.
BS EN 14074 : 2004	For office furniture, tables, desks and storage furniture : test methods for the determination of strength and durability of moving parts.
BS 4438 : 1969	For filing cabinets and suspended filing pockets.
BS 4875-7 Level 4 : 2006	For strength and stability of furniture, domestic and contract storage furniture - performance requirements.

