

Metrix^{adv} Advanced Tambours Product Specification



Key Features

10 year guarantee

New Architectural Design

New single door, clean lines

Designed and manufactured to meet the highest British and international standards

Full range of Triumph colours available

Ribbed tambour door

Improved security, removable barrel lock with 2 split bow keys, which suite with all other products in the range

Accepts A4/ foolscap suspension filing

Lateral filing pockets available to order

Accepts box files

Levelling feet included

Fully welded carcass and cruciform base for maximum strength and stability

Optional Extras

Full range of Triumph accessories

Interlock anti-tilt optional

Specification

Tambour Door

800,1000 and 1200mm widths available

Inset handle

30mm ribbed tambour doors

Anti-static

Single doors

Texture paint finish, scratch resistant and environmentally friendly

Finishes

Full range steel storage colours

| | | | |
|---|---|---|---|
|  |  |  |  |
| BL5 | GP1 | CR1 | GY5 |
|  |  |  |  |
| RD1 | OR3 | YW1 | GN4 |
|  |  |  |  |
| FT1 | OT3 | OX1 | PT2 |
|  |  |  |  |
| SG1 | SG2 | SG8 | CW1 |
|  |  |  |  |
| CO1 | BU3 | AQ2 | PI1 |
|  |  |  | |
| FU1 | WM1 | MT1 | |

Tambour Door Options

Cream, Light grey, Anthracite, Silver, Black, Beech, Maple, Oak, White

triumph

corporate furniture and storage

Metrix^{adv} Advanced Tambour Cupboards



MA221T
h2220 x w1000 x d475



MA208T
h2080 x w800 x d475



MA201T
h2080 x w1000 x d475



MA198T
h1980 x w800 x d475



MA191T
h1980 x w1000 x d475



MA192T
h1980 x w1200 x d47



MA188T
h1880 x w800 x d475



MA181T
h1880 x w1000 x d475



MA182T
h1880 x w1200 x d475



MA168T
h1680 x w800 x d475



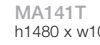
MA161T
h1680 x w1000 x d475



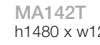
MA162T
h1680 x w1200 x d475



MA148T
h1480 x w800 x d475



MA141T
h1480 x w1000 x d475



MA142T
h1480 x w1200 x d475



MA131T
h1380 x w1000 x d475



MA128T
h1280 x w800 x d475



MA121T
h1280 x w1000 x d475



MA122T
h1280 x w1200 x d475



MA118T
h1180 x w800 x d475



MA111T
h1180 x w1000 x d475



MA112T
h1180 x w1200 x d475



MA108T
h1080 x w800 x d475



MA101T
h1080 x w1000 x d475



MA102T
h1080 x w1200 x d475



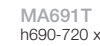
MA988T
h980 x w800 x d475



MA981T
h980 x w1000 x d475

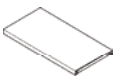


MA698T
h690-720 x w800 x d475
Low profile shelf included

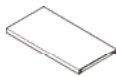


MA691T
h690-720 x w1000 x d475
Low profile shelf included

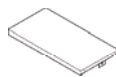
Metrix^{adv} Advanced Tambour Cupboard Accessories



MS8
Standard Shelf
20h x 713w x 404d



MS10/3
Standard Shelf
Pack 3



MWB8
Wardrobe shelf
80h x 713w x 404d



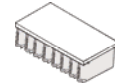
MSALFS8
Duo slotted adjustable
lateral filing shelf
170h x 713w x 404d



MSFS8
Slotted filing shelf
145h x 713w x 404d



MRS8
Pull out reference shelf
40h x 713w x 404d



MLFS8
Lateral filing shelf fixed at
330mm centres
31h x 713w x 404d



MALCR8
Adjustable lateral
filing cradle
27h x 713 x 404d

MS10
20h x 885w x 404d

MWB10
80h x 885w x 404d

MSALFS10
170h x 885w x 404d

MSFS10
145h x 885w x 404d

MRS10
40h x 885w x 404d

MLFS10
31h x 885w x 404d

MALCR10
27h x 885w x 404d

MS12
20h x 1085w x 404d

MSDIV
Dividers for slotted
filing shelf pack 5

MSFS12
145h x 1085w x 404d

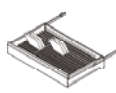
MRS12
40h x 1085w x 404d

MLFS12
31h x 1085w x 404d

MALCR12
27h x 1085w x 404d



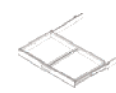
MLC8
Lockable
compartment
400h x 713w x 404d



MFD8
MFD10
MFD12
Pull out filing drawer
shown with cd rack
100h x 660w x 370d
(internal drawer dims)



MLS10
Letter Sorter
330h x 885w x 404d



MPCR8
MPCR10
MPCR12
Pull out vertical
cradle with cross bar



MCR8
MCR10
MCR12
Cross rail
converts footscap
to A4



MDPC
Channels for
MALCR

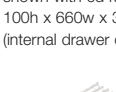


MFD8
MFD10
MFD12
Compressor plate
for pull out filing
drawer pack 6



SCLIPS
Shelf Clips
pack 12

MLC10
400h x 885w x 404d



MLSS
Additional shelves
for Letter Sorter
(5 pack)



AIH80
Index Card
Holders
pack 10



MDPB
T Bars for
MALCR



MDDIV
Dividers for pull
out filing drawer
pack 5

MFDCDR8
MFDCDR10
MFDCDR12
CD storage rack for
pull out filing drawer

Key Information

Fast Key hold stock of key blanks and will cut and supply replacement and master keys for most of our keys within 24 hours. Master keys will only be supplied on an official order or letterhead which must show the end user and contact name.

Simple steps to Order:

1. Make a note of the product
2. Make a note of the serial number on the lock
3. Directly contact Fast key
4. Follow the instructions Fast Key provide

Contact : Marc Narbeth **T** : 01268 562562 **F** : 01268 570121
Fast Key Services Ltd : 3 Pilot Close, Fulmar Way, Wickford, Essex SS11 8YW



**Filing Drawer MFD (CD Rack) allowing 25mm above drawer height
Fixed distance 150mm between drawers**

- INT15D6 Allows maximum of 6 Drawers
- INT15D5 Allows maximum of 5 Drawers
- INT15D4 Allows maximum of 4 Drawers
- INT15D3 Allows maximum of 3 Drawers
- INT15D2 Allows maximum of 2 Drawers

Filing Drawer MFD (Lloyd George medical wallet) allowing 100mm above drawer height. Fixed distance 225mm between drawers

- INT22D5 Allows maximum of 5 Drawers
- INT22D4 Allows maximum of 4 Drawers
- INT22D3 Allows maximum of 3 Drawers
- INT22D2 Allows maximum of 2 Drawers

Vertical Cradle MPCR and pockets

Fixed distance 275mm between cradles

- INT30D4 Allows maximum of 4 Cradles
- INT30D3 Allows maximum of 3 Cradles
- INT30D2 Allows maximum of 2 Cradles

| | Maximum Number of Pull outs used with Anti-tilt | Fixed Distance |
|------------------------|---|----------------|
| Filing Drawer (MFD) | 6 | 150mm |
| Filing Drawer (MFD) | 5 | 225mm |
| Vertical Cradle (MPCR) | 4 | 275mm |

| | No. of Slots From Base | No. of Slots After |
|---|------------------------|--------------------|
| Filing Drawer (MFD) | 8 | 6 |
| Filing Drawer (MFD) (with Lloyd George wallets) | 8 | 9 |
| Vertical Cradle (MPCR) | 10 | 11 |



Filing Capacity

A4 lever arch and lateral file capacity. Units showing maximum capacity of A4 Lever Arch files on shelves and Magnifile Lateral Files on adjustable lateral filing cradles.

Space Left
52mm 25mm

2220 High

Space Left

1980 High

Space Left

1880 High

Space Left

1680 High

Space Left
12mm 185mm

1480 High

Space Left

1380 High

Space Left

1280 High

Space Left
62mm 195mm

1180 High

Space Left
313mm 85mm

1080 High

Space Left
240mm

980 High

Space Left

695 High

A4 lever arch Shelves
shelf to shelf 350mm
between shelves 330mm

Lateral File Shelves
shelf to shelf 300mm
between shelves 270mm

Product Cleaning

To care for your Triumph unit we recommend it is wiped over with a damp cloth or duster. Do not use any abrasive or solvent based cleaner that may permanently damage the paint finish.

Metrix^{adv} Tambour Cupboards are Certified to the following British Standards

- BS 1449 Part 1 : 1983** Steel. A certificate of conformity is provided by the supplier for each delivery of Steel received.
- BS 4875-8 : 1998** For furniture strength and stability of furniture, methods for determination of stability of non-domestic storage.
- BS EN 14073-2 : 2004** For office furniture - storage furniture : safety requirements.
- BS EN 14073-3 : 2004** For office furniture - storage furniture : test methods for the determination of stability and strength of structure.
- BS EN 14074 : 2004** For office furniture, tables, desks and storage furniture : test methods for the determination of strength and durability of moving parts.
- BS 4438 : 1969** For filing cabinets and suspended filing pockets.
- BS 4875-7 Level 4 : 2006** For strength and stability of furniture, domestic and contract storage furniture - performance requirements.

