

# Reception Solutions Product Specification



## Key Features

### 10 year guarantee

20cm high glass shelf with steel uprights available for desktops

Available in a choice of colours

Straight edging supplied as standard

When bullnose is specified it is applied to the two long edges only

Swan leg handling is determined as viewed from the user side

Frosted acrylic counter includes backlights

Optional inset modesty panel receptions

DDA compliant versions available

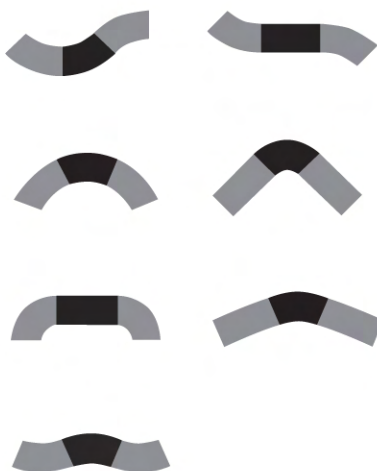
### Optional Extras

Counter tops or glass shelving

## Specification

Design your own, with various shapes.

Sample configurations shown below:



## Finishes

### Standard MFC finishes

	
Maple /M	Beech /B
	
Oak /O	Cherry /CH
	
Walnut /WA	Lugano Oak /LO
	
White /W	Grey /G

# triumph

corporate furniture and storage

## Standard Reception Units



Code		h	w	d
NTDSM18	straight workstation	725	1800	800
NTDSM16	straight workstation	725	1600	800
NTDSM14	straight workstation	725	1400	800
NTDSM12	straight workstation	725	1200	800
NTDSM10	straight workstation	725	1000	800
NTDSM 8	straight workstation	725	800	800

Code		h	w	d
NTDXM	convex workstation	725	1600	800

Code		h	w	d
NTDVM	concave workstation	725	1600	800

Code		h	w	d
NTD90M	90° linking unit	725	1200	1200

This unit must have at least one swan leg. Any adjoining unit must have a swan leg to suit.  
This item is not suitable for use as a stand alone unit.

## Inset Modesty Panel Reception Units



Code		h	w	d
NTDSMI18	straight workstation	725	1800	800
NTDSMI16	straight workstation	725	1600	800
NTDSMI14	straight workstation	725	1400	800
NTDSMI12	straight workstation	725	1200	800
NTDSMI10	straight workstation	725	1000	800
NTDSMI8	straight workstation	725	800	800

Code		h	w	d
NTDXMI	convex workstation	725	1600	800

Code		h	w	d
NTDVMI	concave workstation	725	1600	800

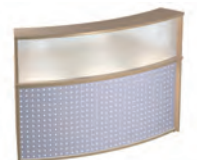
Code		h	w	d
NTD90MI	90° linking unit	725	1200	1200

This unit must have at least one swan leg. Any adjoining unit must have a swan leg to suit.  
This item is not suitable for use as a stand alone unit.

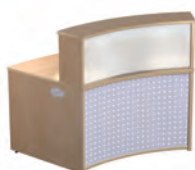
## Reception and Counter Units



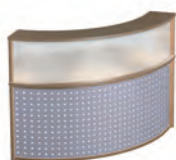
Acrylic counter shown



Acrylic counter shown



Acrylic counter shown



Acrylic counter shown

Code		h	w	d
NTRSMC18	straight reception and counter unit	1125	1800	800
NTRSMC16	straight reception and counter unit	1125	1600	800
NTRSMC14	straight reception and counter unit	1125	1400	800
NTRSMC12	straight reception and counter unit	1125	1200	800
NTRSMC10	straight reception and counter unit	1125	1000	800
NTRSMC8	straight reception and counter unit	1125	800	800

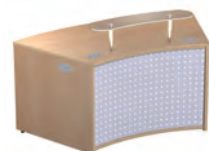
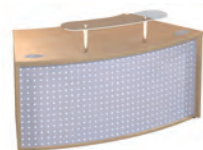
Code		h	w	d
NTRXMC	convex reception and counter unit	1125	1600	800

Code		h	w	d
NTRVMC	concave reception and counter unit	1125	1600	800

Code		h	w	d
NTR90MC	90° linking unit reception and counter unit	725	1200	1200

This unit must have at least one swan leg. Any adjoining unit must have a swan leg to suit. This item is not suitable for use as a stand alone unit.

## Shelf Unit Receptions



Code		h	w	d
NTRSMS18	straight shelf unit reception	725	1800	800
NTRSMS16	straight shelf unit reception	725	1600	800
NTRSMS14	straight shelf unit reception	725	1400	800
NTRSMS12	straight shelf unit reception	725	1200	800
NTRSMS10	straight shelf unit reception	725	1000	800
NTRSMS8	straight shelf unit reception	725	800	800

Code		h	w	d
NTRXMS	convex shelf unit reception	725	1600	800

Code		h	w	d
NTRVMS	concave shelf unit reception	725	1600	800

Code		h	w	d
NTR90MS	90° linking unit shelf unit reception	725	1200	1200

This unit must have at least one swan leg. Any adjoining unit must have a swan leg to suit. This item is not suitable for use as a stand alone unit.

