

Metrix E Desk

Product Specification



Key Features

12 year guarantee

Electronically adjustable by key pad
 Choice of desktop finishes
 Standard frame finish : Silver SG8
 Optional frame finish : any other Triumph colour extra 10% surcharge
 25mm desktop
 Height levelling feet
 Desktops carry threaded inserts for fixings
 Worksurface : 775mm deep
 For single desks with no screens, specify 800mm deep worksurface when ordering
 Worktop sourced from sustainable resources and is FSC accredited TT-COC-001930

Optional Extras

Cable tray
 Screens
 Desks accessories

Specification

Legs

Height levelling feet

Worksurfaces

25mm MFC desktop
 High impact edging
 Colour matched

Height Adjustable : 670-850mm

Finishes

Standard Tops



Maple /M



Beech /B



Oak /O



Cherry /CH



Walnut /WA



Lugano Oak /LO



White /W



Grey /G

triumph

corporate furniture and storage

Metrix Desking E Desk Straight



Code	h	w	d
MEB/88	670-850	800	800
MEB/18	670-850	1000	800
MEB/128	670-850	1200	800
MEB/148	670-850	1400	800
MEB/168	670-850	1600	800
MEB/188	670-850	1800	800

Metrix Desking E Desk Double Wave



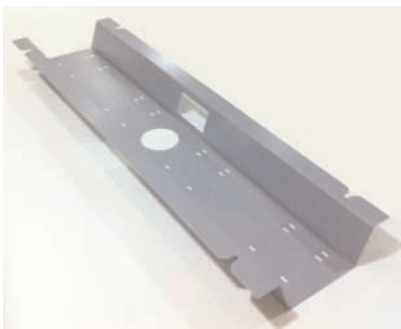
Code	h	w	d
MEBDW/1288	670-850	1200	800/800
MEBDW/1488	670-850	1400	800/800
MEBDW/1688	670-850	1600	800/800
MEBDW/1888	670-850	1800	800/800

Metrix Desking E Desk 120 Degree



Code	h	w	d
MEBA/121288	670-850	1200/1200	800/800
MEBA/121266	670-850	1200/1200	600/600

Cable Management : Horizontal



Please specify

SCT - single sided workstations

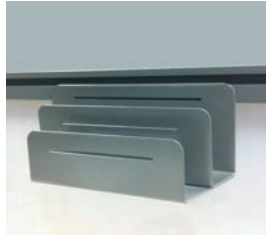
CCT - back to back workstations

Code	w
MB/600/SCT	600 for use on 800 workstation
MB/800/SCT	800 for use on 1000 workstation
MB/1000/SCT	1000 for use on 1200 workstation
MB/1200/SCT	1200 for use on 1400 workstation
MB/1400/SCT	1400 for use on 1600 workstation
MB/1600/SCT	1600 for use on 1800 workstation
MB/600/CCT	600 for use on 800 workstation
MB/800/CCT	800 for use on 1000 workstation
MB/1000/CCT	1000 for use on 1200 workstation
MB/1200/CCT	1200 for use on 1400 workstation
MB/1400/CCT	1400 for use on 1600 workstation
MB/1600/CCT	1600 for use on 1800 workstation

Accessories



Pen Pot



Paper sorter



Letter tray



Hotbox



Waste paper bin

Screens



Plain top cap



Plain tool rail



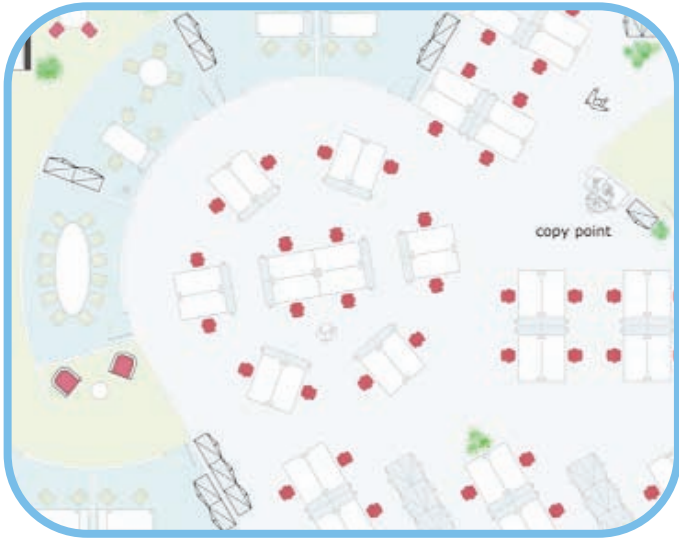
3 bar tool rail

Straight or wave options
Mounting bracket included
Choice of fabric colour options
Floor standing available

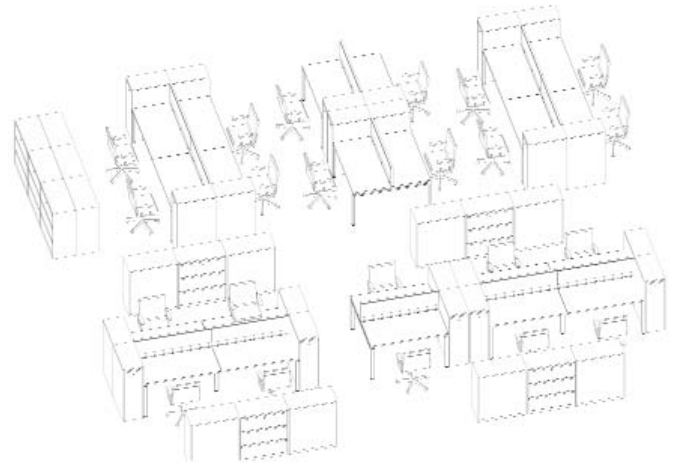
Metrix Desking E Desk is Certified to the following British Standards

FSC	Triumph has FSC Chain of Custody Accreditation. Certificate No TT-COC-001930
BS EN 527-2: 2002	Office furniture - worktables and desks - Part 2 mechanical safety requirements.
BS EN 527-3 : 2003	Office furniture - worktables and desks Part 3 methods of test for the determination of the stability and the mechanical strength of the structure.
BS 6396 : 2008	Electrical requirements of office furniture.
BS EN ISO 9241 : 1999	Ergonomic requirement for office work with visual display terminals Part 5 Workstation layout and postural requirements.
BS 6396 : 2008	Electrical systems in office furniture and educational furniture.

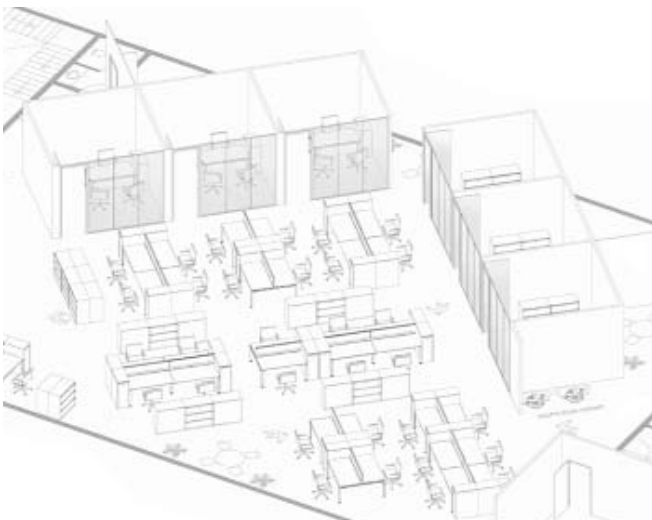




Workplace Layouts : example plan



Workstation : example groupings



Workstation : example groupings



Workplace Layouts : example plan

Environment : Product Lifecycle

