

Metrix Desking Height Settable Product Specification



Key Features

12 year guarantee

Height adjustment by bolt operated ratchet system
 Choice of desktop finishes
 Standard frame finish : Silver SG8
 Optional frame finish : any other Triumph colour
 extra 10% surcharge
 25mm desktop
 Height levelling feet
 Desktops carry threaded inserts for fixings
 Worksurface : 775mm deep
 For single desks with no screens, specify 800mm
 deep worksurface when ordering
 Worktop sourced from sustainable resources
 and is FSC accredited TT-COC-001930

Optional Extras

Cable tray
 Screens
 Desks accessories
 Desk extensions

Specification

Legs

Height levelling feet

Worksurfaces

25mm MDF desktop
 High impact edging
 Colour matched

Height settable : 650-900

Finishes

Standard Tops



Maple /M



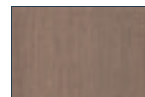
Beech /B



Oak /O



Cherry /CH



Walnut /WA



Lugano Oak /LO



White /W



Grey /G

triumph

corporate furniture and storage

Metrix Desking Height Settable Straight



| Code | h | w | d |
|----------|---------|------|-----|
| MB/S/88 | 650-900 | 800 | 800 |
| MB/S/18 | 650-900 | 1000 | 800 |
| MB/S/128 | 650-900 | 1200 | 800 |
| MB/S/148 | 650-900 | 1400 | 800 |
| MB/S/168 | 650-900 | 1600 | 800 |
| MB/S/188 | 650-900 | 1800 | 800 |

Metrix Desking Height Settable Double Wave



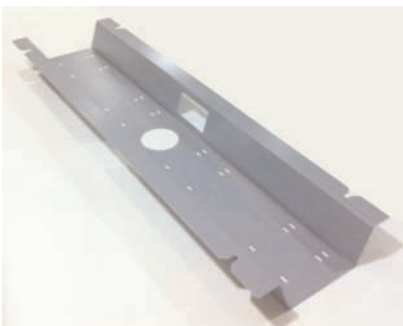
| Code | h | w | d |
|-------------|---------|------|---------|
| MBDW/S/1288 | 650-900 | 1200 | 800/800 |
| MBDW/S/1488 | 650-900 | 1400 | 800/800 |
| MBDW/S/1688 | 650-900 | 1600 | 800/800 |
| MBDW/S/1888 | 650-900 | 1800 | 800/800 |

Metrix Desking Height Settable 120 Degree



| Code | h | w | d |
|--------------|---------|-----------|---------|
| MBA/S/121288 | 650-900 | 1200/1200 | 800/800 |
| MBA/S/121266 | 650-900 | 1200/1200 | 600/600 |

Cable Management : Horizontal



Please specify

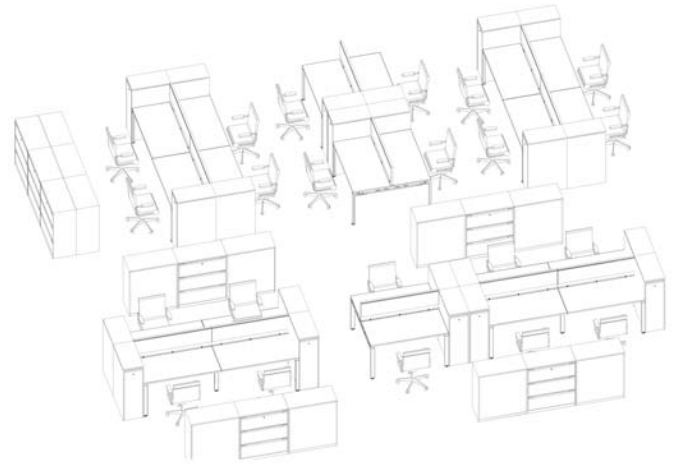
SCT - single sided workstations

CCT - back to back workstations

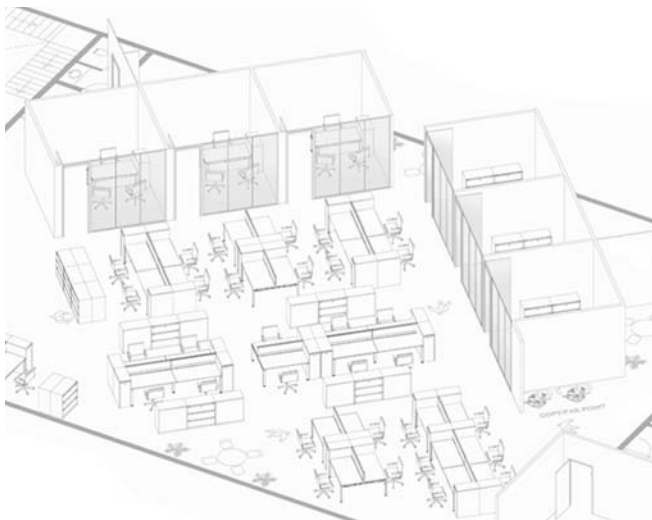
| Code | w |
|-------------|----------------------------------|
| MB/600/SCT | 600 for use on 800 workstation |
| MB/800/SCT | 800 for use on 1000 workstation |
| MB/1000/SCT | 1000 for use on 1200 workstation |
| MB/1200/SCT | 1200 for use on 1400 workstation |
| MB/1400/SCT | 1400 for use on 1600 workstation |
| MB/1600/SCT | 1600 for use on 1800 workstation |
| MB/600/CCT | 600 for use on 800 workstation |
| MB/800/CCT | 800 for use on 1000 workstation |
| MB/1000/CCT | 1000 for use on 1200 workstation |
| MB/1200/CCT | 1200 for use on 1400 workstation |
| MB/1400/CCT | 1400 for use on 1600 workstation |
| MB/1600/CCT | 1600 for use on 1800 workstation |



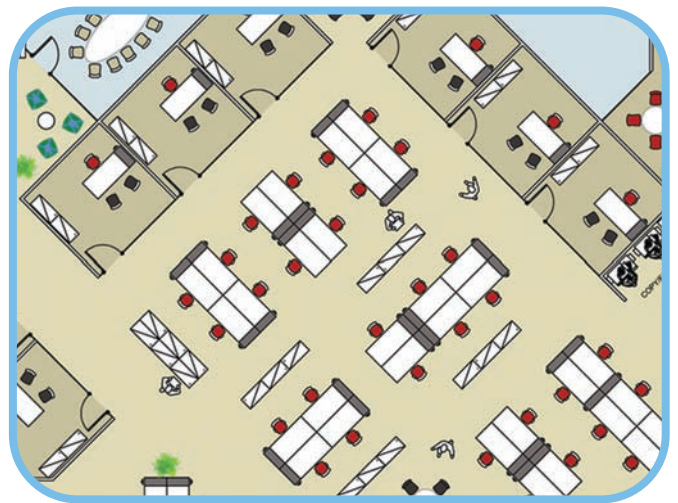
Workplace Layouts : example plan



Workstation : example groupings



Workstation : example groupings



Workplace Layouts : example plan

Environment : Product Lifecycle

