

Metrix Desking Height Adjustable Product Specification

the UK furniture making business



Key Features

12 year guarantee

Manually adjustable by hand crank handle on any leg
Choice of desktop finishes
Standard frame finish : Silver SG8
Optional frame finish : any other Triumph colour
extra 10% surcharge
25mm desktop
Height levelling feet
Desktops carry threaded inserts for fixings
Worksurface : 775mm deep
For single desks with no screen, specify 800mm
deep worksurface when ordering
Worktop sourced from sustainable resources
and is FSC accredited TT-COC-001930

Optional Extras

Cable tray
Screens
Desks accessories
Desk extensions

Specification

Legs

Height levelling feet

Worksurfaces

25mm MFC desktop
High impact edging
Colour matched

Height Adjustable : 670-850mm

Finishes

Standard Tops



Maple /M



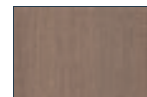
Beech /B



Oak /O



Cherry /CH



Walnut /WA



Lugano Oak /LO



White /W



Grey /G

triumph

corporate furniture and storage

Metrix Desking Height Adjustable Straight



Code	h	w	d
MB/A/88	670-850	800	800
MB/A/18	670-850	1000	800
MB/A/128	670-850	1200	800
MB/A/148	670-850	1400	800
MB/A/168	670-850	1600	800
MB/A/188	670-850	1800	800

Metrix Desking Height Adjustable Double Wave



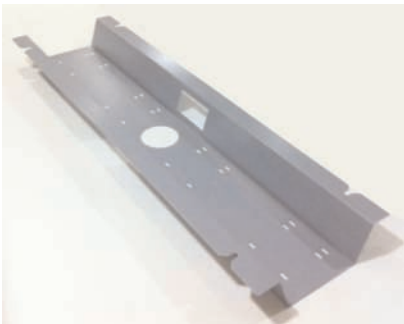
Code	h	w	d
MBDW/A/1288	670-850	1200	800/800
MBDW/A/1488	670-850	1400	800/800
MBDW/A/1688	670-850	1600	800/800
MBDW/A/1888	670-850	1800	800/800

Metrix Desking Height Adjustable 120 Degree



Code	h	w	d
MBA/A/121288	670-850	1200/1200	800/800
MBA/A/121266	670-850	1200/1200	600/600

Cable Management : Horizontal



Please specify

SCT - single sided workstations

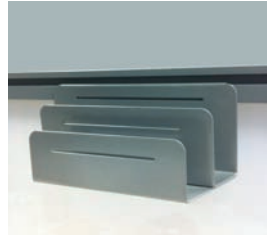
CCT - back to back workstations

Code	w
MB/600/SCT	600 for use on 800 workstation
MB/800/SCT	800 for use on 1000 workstation
MB/1000/SCT	1000 for use on 1200 workstation
MB/1200/SCT	1200 for use on 1400 workstation
MB/1400/SCT	1400 for use on 1600 workstation
MB/1600/SCT	1600 for use on 1800 workstation
MB/600/CCT	600 for use on 800 workstation
MB/800/CCT	800 for use on 1000 workstation
MB/1000/CCT	1000 for use on 1200 workstation
MB/1200/CCT	1200 for use on 1400 workstation
MB/1400/CCT	1400 for use on 1600 workstation
MB/1600/CCT	1600 for use on 1800 workstation

Accessories



Pen Pot



Paper sorter



Letter tray



Hotbox



Waste paper bin

Screens



Plain top cap



Plain tool rail



3 bar tool rail

Straight or wave options
Mounting bracket included
Choice of fabric colour options
Floor standing available

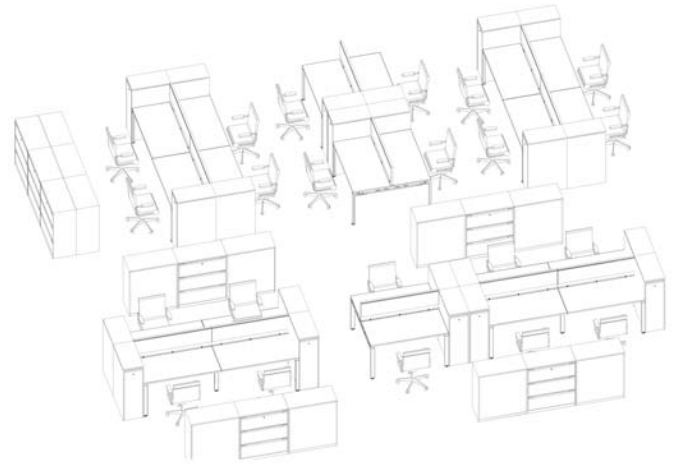
Metrix Desking Height Adjustable is Certified to the following British Standards

FSC	Triumph has FSC Chain of Custody Accreditation. Certificate No TT-COC-001930
BS EN 527-2: 2002	Office furniture - worktables and desks - Part 2 mechanical safety requirements.
BS EN 527-3 : 2003	Office furniture - worktables and desks Part 3 methods of test for the determination of the stability and the mechanical strength of the structure.
BS 6396 : 2008	Electrical requirements of office furniture.
BS EN ISO 9241 : 1999	Ergonomic requirement for office work with visual display terminals Part 5 Workstation layout and postural requirements.
BS 6396 : 2008	Electrical systems in office furniture and educational furniture.

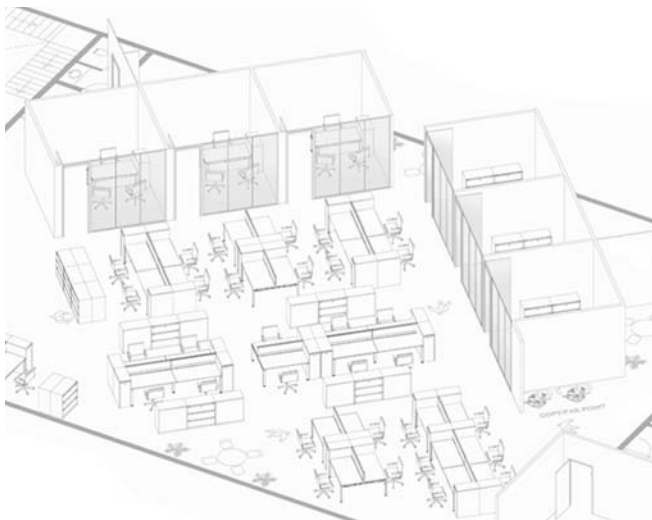




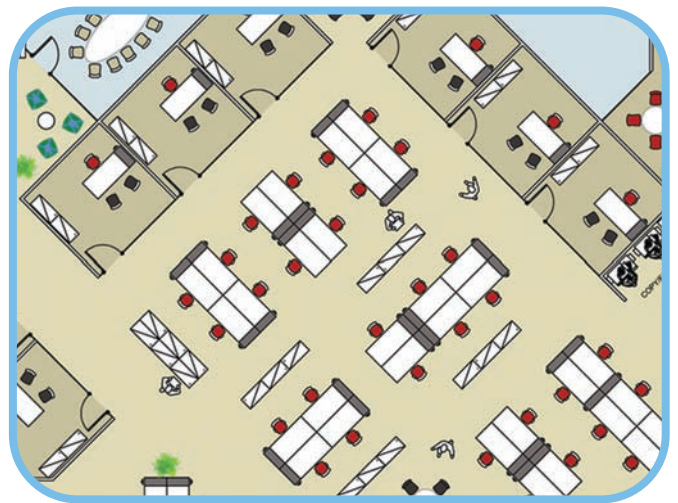
Workplace Layouts : example plan



Workstation : example groupings



Workstation : example groupings



Workplace Layouts : example plan

Environment : Product Lifecycle

