

Everyday Panel Desking Product Specification



Key Features

10 year guarantee

Choice of desktop finishes

Choice of Shapes :

Straight

Single and double wave

Crescent

720mm high

Worktop sourced from sustainable resources and is FSC Accredited TT-COC-001930

Specification

Worksurfaces

25mm MFC top

High impact ABS edging

Height levelling feet

Panelled underframe 25mm

Supplied with modesty panel
18mm/400mm high

Desktop carries threaded inserts for fixings

Finishes

Standard Tops



Maple /M



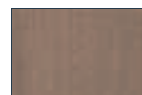
Beech /B



Oak /O



Cherry /CH



Walnut /WA



Lugano Oak /LO



White /W



Grey /G

triumph

corporate furniture and storage

Everyday Panel Straight Desking



Code	h	w	d
DWSH/88	720	800	800
DWSH/18	720	1000	800
DWSH/128	720	1200	800
DWSH/148	720	1400	800
DWSH/168	720	1600	800
DWSH/188	720	1800	800

Everyday Panel Single Wave Desking



Code	h	w	d
DWSWH/1218	720	1200	1000/800
DWSWH/1418	720	1400	1000/800
DWSWH/1618	720	1600	1000/800
DWSWH/1818	720	1800	1000/800

Please specify left or right hand when ordering

DWSWH/1286	720	1200	800/600
DWSWH/1486	720	1400	800/600
DWSWH/1686	720	1600	800/600
DWSWH/1886	720	1800	800/600

Please specify left or right hand when ordering

Everyday Panel Double Wave Desking



Code	h	w	d
DWDWH/1488	720	1400	800/800
DWDWH/1411	720	1400	1000/1000
DWDWH/1688	720	1600	800/800
DWDWH/1611	720	1600	1000/1000
DWDWH/1888	720	1800	800/800
DWDWH/1811	720	1800	1000/1000

Everyday Panel Crescent Desking



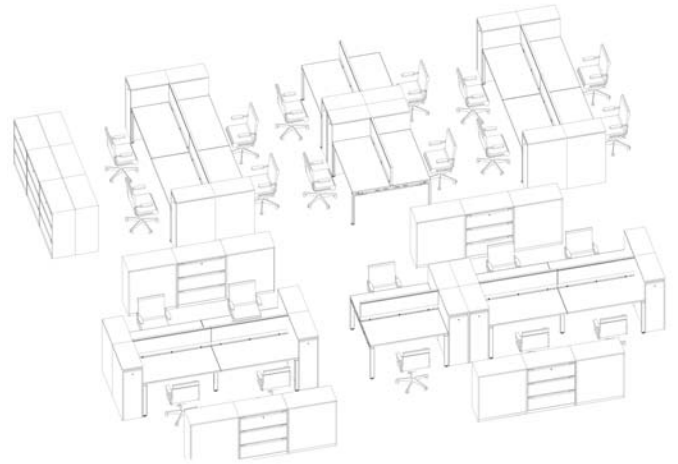
Code	h	w	d
DWCH/141286	720	1400/1200	800/600
DWCH/141288	720	1400/1200	800/800
DWCH/161286	720	1600/1200	800/600
DWCH/161288	720	1600/1200	800/800
DWCH/181286	720	1800/1200	800/600
DWCH/181288	720	1800/1200	800/800

Please specify left or right hand when ordering

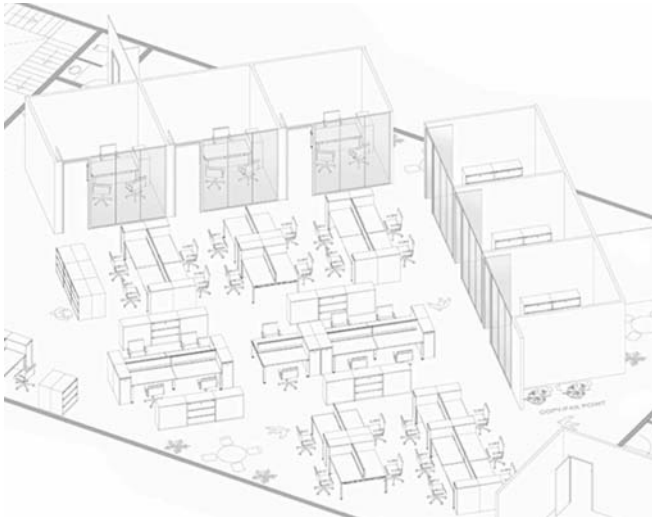
Creating Workplace Environments



Workplace Layouts : example plan



Workstation : example groupings

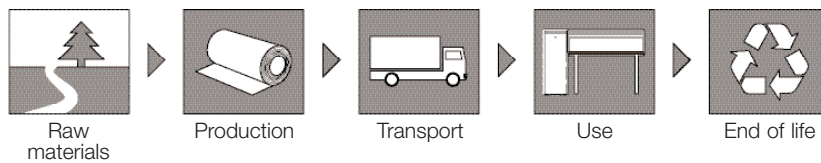


Workstation : example groupings



Workplace Layouts : example plan

Environment : Product Lifecycle



Everyday Panel Desking is Certified to the following British Standards

- FSC** Triumph has FSC Chain of Custody Accreditation. Certificate No **TT-COC-001930**
- BS EN 527-2 : 2002** Office furniture - worktables and desks - Part 2 mechanical safety requirements.
- BS EN 527-3 : 2003** Office furniture - worktables and desks Part 3 methods of test for the determination of the stability and the mechanical strength of the structure.
- BS 6396 : 2008** Electrical requirements of office furniture.
- BS EN ISO 9241 : 1999** Ergonomic requirement for office work with visual display terminals Part 5 Workstation layout and postural equipments.
- BS 6396 : 2008** Electrical systems in office furniture and educational furniture.

